



# Dell™ PowerVault™ 660F/224F Systems — Creating or Adding Virtual Disks in a Direct- Attach Environment

www.dell.com | support.dell.com

If you directly attach a PowerVault 660F storage system to a server, you can use the Dell OpenManage™ Array Manager program's **Create Virtual Disk** command to create new virtual disks. However, *do not* use the **Add Virtual Disk** command.

In a direct-attach environment, the **Add Virtual Disk** command adds a new virtual disk, but the server cannot access it. This situation does not pose any threat to your access to or to the integrity of existing data. However, the virtual disk added using this command is inaccessible. This issue applies to Array Manager versions up to and including version 3.1.1 and will be fixed in a later version of Array Manager.

The **Add Virtual Disk** command adds an array disk (physical disk) to an existing disk group and creates a new virtual disk using the added capacity. During this process, the original virtual disks in the disk group are restriped to include the new virtual disk.

The **Create Virtual Disk** command creates one or more virtual disks on a newly created disk group.

## Recovering the Inaccessible Storage Capacity

If you have already used the **Add Virtual Disk** command with a direct-attached PowerVault 660F storage system, you can recover and reuse the inaccessible storage capacity by performing the following steps:

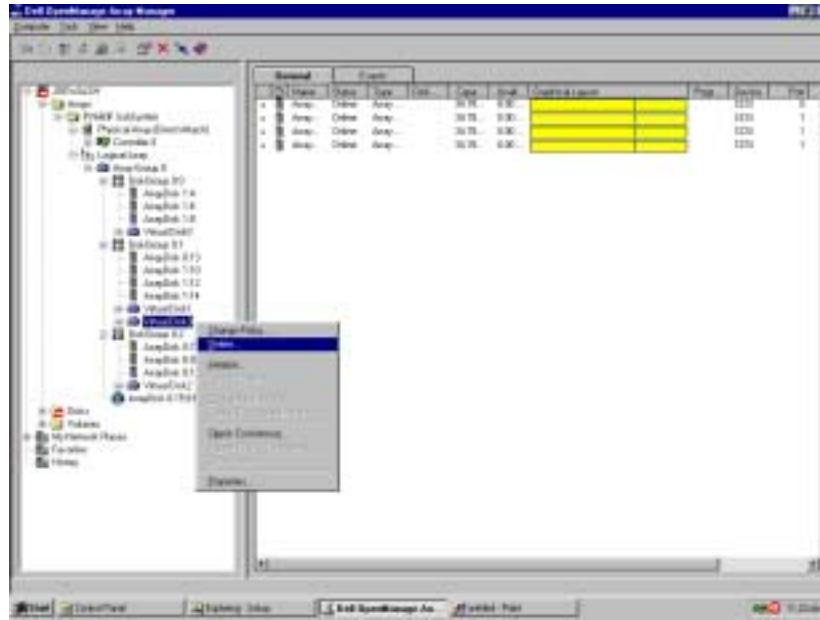
- 1 Back up the data on any virtual disks in disk groups listed below the disk group where you performed the **Add Virtual Disk** command.
- 2 Delete the inaccessible virtual disk in the left panel (see Figure 1).
- 3 Delete, in reverse numerical order, all virtual disks and disk groups that appear in the object tree below the inaccessible virtual disk you just deleted.
- 4 Locate the disk group that contained the inaccessible disk and create a new virtual disk using the space available.

P/N 3M816 Rev. A00  
October 2001



03M816A00

Figure 1. Delete in Reverse Order up to the Deleted Virtual Disk



- 5 Use the **Create Disk Group** and **Create Virtual Disk** commands to re-create all the disk groups and virtual disks you deleted in step 3.

The virtual disks you create in step 5 have virtual disk numbers that are one higher than the virtual disks you deleted in step 3. Be careful when assigning the drive letters to the virtual disks when you create volumes and partition them in Array Manager.

- 6 Restore the data to the virtual disks you created in step 5.

For more information about performing these tasks, see your backup software documentation and the *Dell OpenManage Array Manager User's Guide*.

---

Information in this document is subject to change without notice.

© 2001 Dell Computer Corporation. All rights reserved. Printed in the U.S.A.

Reproduction in any manner whatsoever without the written permission of Dell Computer Corporation is strictly forbidden.

Trademarks used in this text: *Dell*, the *DELL* logo, *PowerVault*, and *Dell OpenManage* are trademarks of Dell Computer Corporation. Other trademarks and trade names may be used in this document to refer to either the entities claiming the marks and names or their products. Dell Computer Corporation disclaims any proprietary interest in trademarks and trade names other than its own.